

AgroKar



AGROKAR SOLUTIONS CATALOG FOR JOHN DEERE EQUIPMENT

- SEEDERS SERIES 50, 60, 90
- HOPPERS 1900, 1910

LIST OF PARTS FOR TUNING FROM AGROKAR



AG-K04

HD Pin and bushings for section attachment to the frame, reinforced (set)

- precision-ground and hardened pin for longer service life
- eliminates play in the seeding section
- keeps the section in a straight direction

FOR JOHN DEERE
SERIES 60, 90



AG-K02

HD Pin, bushings, and seals for the press wheel (set with hardware)

- service life increased by 3 times
- eliminates excessive play (looseness) or jamming
- eliminates the need for daily lubrication
- prevents soil and foreign particles from entering

FOR JOHN DEERE
SERIES 60, 90



AG-K01

HD Pin with bushings and seals for the closing wheel (set with hardware)

- **service life increased by 3 times**
- **eliminates excessive play (looseness) or jamming**
- **eliminates the need for daily lubrication**
- **prevents soil and foreign particles from entering**

FOR JOHN DEERE
SERIES 60, 90



AG-K05

HD wear-resistant plate / seed deflector

- with UV protection
- follows the furrow and prevents seed bounce
- service life is 4 times longer than the original manufacturer's
- stainless steel attachment

FOR JOHN DEERE
SERIES 50, 60, 90

ORIG
No N219982



NA-K01

Compacting (press) wheel

- perfectly follows the furrow track
- double-row ball bearing with extended service life
- significantly more wear-resistant compared to the original

FOR JOHN DEERE
SERIES 50, 60, 90

ORIG
No AN282296



AG2064R

3" (77mm) spoked gauge wheel

- reinforced cast hub with spokes for increased strength
- narrow spokes leave large windows for clearing soil and debris
- repairability: stamped rims with a removable bearing

FOR JOHN DEERE
SERIES 50, 60, 90

ORIG
No AA85465



AG2064U

3" (77mm) spoked gauge wheel with polyurethane tire

- reinforced cast hub with spokes for increased strength
- narrow spokes leave large windows for clearing soil and debris
- repairability: stamped rims with a removable bearing
- polyurethane wear-resistant tire

FOR JOHN DEERE
SERIES 50, 60, 90

ORIG
No AA85465



AG2080R

4.5" (114mm) spoked gauge wheel

- reinforced cast hub with spokes for increased strength
- narrow spokes leave large windows for clearing soil and debris
- repairability: stamped rims with a removable bearing

FOR JOHN DEERE
SERIES 50, 60, 90

ORIG AA98187, AA86055, AA98187
No AA86226, AA66604, AA66599



AG1042R

Standard 4-1/2" (114.3 mm) gauge wheel assembly

- metal wheel half-disc
- original from the manufacturer
- high-quality factory bearing

FOR JOHN DEERE
SERIES 50, 60, 90

ORIG
No AA66599



AG2085U

3" (77 mm) polyurethane gauge wheel tire

- polyurethane gauge wheel wears much slower, increasing service life, especially for sowing on stubble
- direct replacement for OEM

FOR JOHN DEERE
SERIES 50, 60, 90

ORIG
№ A85133, A75374, A84349



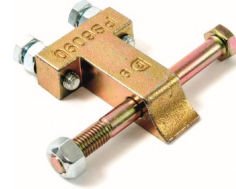
AG2086U

4.5" (114 mm) polyurethane gauge wheel tire

- polyurethane gauge wheel wears much slower, increasing service life, especially for sowing on stubble
- direct replacement for OEM

FOR JOHN DEERE
SERIES 50, 60, 90

ORIG
№ A84050, A22884



AG-K07-ST

Tensioner (stabilizer)

- significantly reduces seed boot play
- easy to install, no drilling or additional holes required
- new hardware included

FOR JOHN DEERE
SERIES 50, 60, 90



RE-K01

Toothed closing wheel

- closes the planting groove better than the factory John Deere wheel
- 20% cheaper than the factory wheel
- made from wear-resistant and impact-resistant steel for long-term use

FOR JOHN DEERE
SERIES 50, 60, 90

ORIG
№ N282110



AG1254

Copperhead toothed closing wheel

- Unique combination of groove closure and soil compaction even with no-till
- Angled tooth design helps prevent clogging
- Suitable for all soils - from sandy to heavy and clay.

FOR JOHN DEERE
SERIES 50, 60, 90

ORIG
№ N282110



AG1049

HD furrow opener spring with extended service life

- Service life twice as long as the original manufacturer's
- Ecoguard™ coating for extreme corrosion protection
- 25% improved elasticity

FOR JOHN DEERE
SERIES 50, 60, 90

ORIG
№ N284055 И N280485



AG9343L

PROSERIES Seed Boot, new model

- Reduced diameter of the seed tube allows for a narrower boot for better soil penetration
- Positioned closer to the disc opener, improving seeding quality
- Seed exit hole positioned higher than the factory version, allowing for longer boot use

ORIG N284044, N284045, N284024, N284025



AG9344R

PROSERIES Seed Boot, new model

- Reduced diameter of the seed tube allows for a narrower boot for better soil penetration
- Positioned closer to the disc opener, improving seeding quality
- Seed exit hole positioned higher than the factory version, allowing for longer boot use

ORIG N284044, N284045, N284024, N284025



AG1059R

PROSERIES Seed Boot, high durability

- Replaces the John Deere opener with a wear-resistant opener
- Improves seed placement and even distribution
- Excellent performance in hard soil conditions

ORIG N284044, N284045, N284024, N284025



AG1059L

High Durability Seed Boot

- Replaces John Deere opener with a wear-resistant opener
- Enhances seed sowing and uniform distribution
- Excellent performance in hard soil conditions

ORIG N284044, N284045, N284024, N284025



SH314190

18" Wear-resistant disc opener (Shoup)

- **Lasts 20% longer than standard discs**
- **Designed to cut through tough, dense residues**
- **Made in Canada from boron steel**

FOR JOHN DEERE SERIES 50, 60, 90

ORIG N283804, N214190



RE4926

19" Toothed disc opener

- JD 19 cutting disc with teeth
- Special cutting edge effectively cuts through crop residues
- Use on front rows for placing fertilizers below seed burial depth

FOR JOHN DEERE SERIES 50, 60, 90

ORIG N283804, N214190



AG1162

Spacer for pressure springs of the 60 and 90 series openers

- Designed for sections that pass through tractor tracks
- Increases the pressing force of the opener by 30-40 kg
- Enhances cutting through compacted soil and plant residues

FOR JOHN DEERE
SERIES 60, 90



AG1152

Spacer for pressure springs of the 50 series openers

- Tailored for sections passing through tractor tracks
- Boosts the pressing force of the opener by 30-40 kg
- Improves cutting through compacted soil and plant residues

FOR JOHN DEERE
SERIES 50



AG1076R

Spring for the compacting (press) wheel (increased durability)

- Powder-coated to prevent rust
- Increases pressing force by 5%, extends service life by 20%

FOR JOHN DEERE
SERIES 50, 60, 90

НЕ ИМЕЕТ АНАЛОГОВ!

ORIG № N282218, N282219



AG1076R

Spring for the compacting (press) wheel (increased durability)

- Powder-coated to prevent rust
- Increases pressing force by 5%, extends service life by 20%

FOR JOHN DEERE
SERIES 50, 60, 90

ORIG № N282218, N282219



AG-K14L

Spring for the closing wheel (increased durability)

- Powder-coated to prevent rust
- Increases pressing force by 5%, extends service life by 20%

FOR JOHN DEERE
SERIES 50, 60, 90

ORIG № N283994, N283995, N282888
N282889



AG-K14R

Spring for the closing wheel (increased durability)

- Powder-coated to prevent rust
- Increases pressing force by 5%, extends service life by 20%

FOR JOHN DEERE
SERIES 50, 60, 90

ORIG № N283994, N283995, N282888
N282889



AG2028

SKF 5203KYY2 Bearing

- A replacement part from the manufacturer or a version with an extended service life
- High-quality replacement for the original from the manufacturer
- Service life extended by twice

FOR JOHN DEERE
SERIES 60, 90

ORIG
№ AN212132



AG-K16L

Left Lever Protection Kit

- Triple lip seal on the disc side, quad ring, and individual U-shaped seal for the spindle
- Includes: HD depth lever seal, enhanced triple-edge seals, quad ring seal, stock shroud, stainless steel adjusting washer.

FOR JOHN DEERE
SERIES 60, 90

ORIG
№ B13294, P45750, N283788
N283789



AG-K16R

Right Lever Protection Kit

- Triple lip seal on the disc side, quad ring, and individual U-shaped seal for the spindle
- Includes: HD depth lever seal, enhanced triple-edge seals, quad ring seal, stock shroud, stainless steel adjusting washer.

FOR JOHN DEERE
SERIES 60, 90

ORIG
№ B13294, P45750, N283788
N283789



AG-K03 L

HD Seal Kit for Depth Control Regulator (Left Kit with Hardware)

- Custom seals prevent depth regulator jamming
- Fully isolates the depth regulator shaft
- Improved regulator lever for better lubrication

FOR JOHN DEERE
SERIES 60, 90

ORIG
№ AA73951, N282118/N282119
P45750



AG-K03 R

HD Seal Kit for Depth Control Regulator (Left Kit with Hardware)

- Custom seals prevent depth regulator jamming
- Fully isolates the depth regulator shaft
- Improved regulator lever for better lubrication

FOR JOHN DEERE
SERIES 60, 90

ORIG
№ AA73951, N282118/N282119
P45750



AG-K08

Universal Depth Lever

- Universal, replaces both left and right configurations
- Twice as cheap compared to the original from the manufacturer
- Made of steel, which triples the service life

FOR JOHN DEERE
SERIES 60, 90

ORIG
№ AN282108, AN282109



SEEDLINER

Seedliner

- Exclusive development by Needham-AG Technologies
- Designed specifically to reduce seed damage (peanuts, rapeseed, soy) against the metal cover
- Directs seeds radially from the center into the seed tube
- Made from wear-resistant, high-strength material suitable for seeds and fertilizers

FOR JOHN DEERE
SERIES 50, 60, 90



NA-K02

Seedbreaker

- Made of stainless steel
- 2mm holes for air release
- Designed for long-term use
- Reduces seed and fertilizer loss

FOR JOHN DEERE
SERIES 50, 60, 90



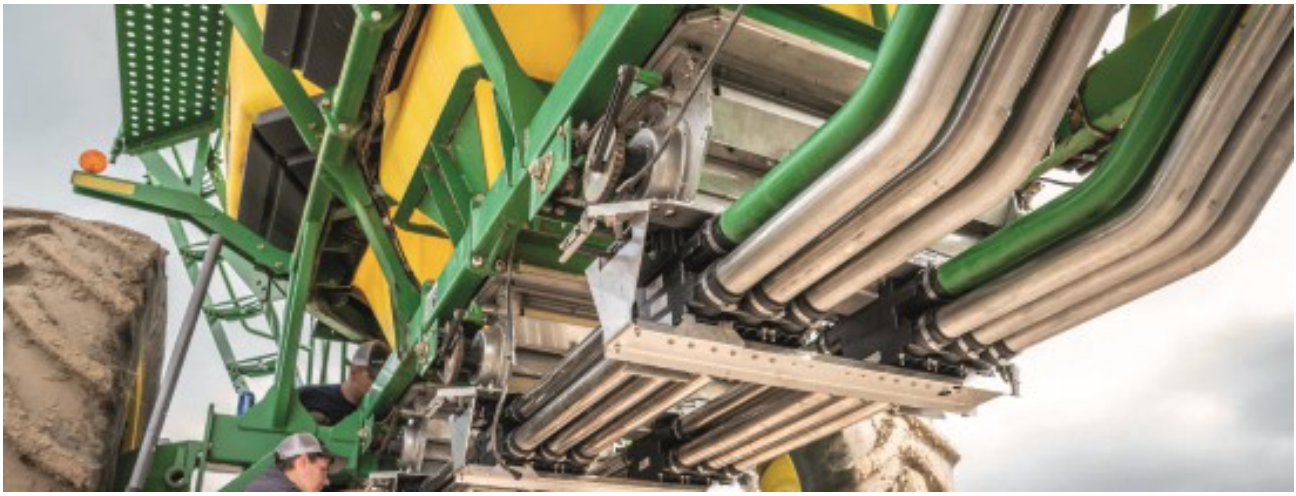
AN281813

JD1890 Disk Opener Bearing

- 20% increased service life
- Fits all John Deere 1560, 1860, 1590, 1890 disk openers

FOR JOHN DEERE
SERIES 60, 90

STAINLESS STEEL COMPONENTS AND PARTS FOR PNEUMATIC TRAILERS



AG2092EXT

Seed Tube Hose (24.4 x 32 mm)

- Operating temperature from -20 to +65
- Working pressure up to 85 psi (5.85 bar)
- Resistant to aggressive environments, used for seeds and fertilizers

FOR JOHN DEERE
SERIES 50, 60, 90



AG2093EXT

Main Pipe Hose (63.5 x 73 mm)

- Operating temperature from -20 to +65
- Working pressure up to 85 psi (5.85 bar)
- Resistant to aggressive environments, used for seeds and fertilizers

FOR JOHN DEERE
SERIES 50, 60, 90



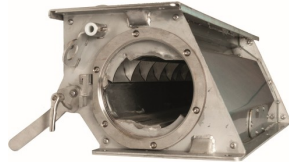
Stainless Pipes

- Made from stainless steel
- Last 3-5 times longer than regular factory pipes

FOR JOHN DEERE
SERIES 1900, 1910

**ORIG
No**

AA54440, AA57195, A59345,
A59346, A59347, A59348,
A63186, A63190, A63192,
A65348, A65658, A72998



- Stainless steel construction ensures long-term reliable operation
- Maintains full functionality and characteristics of all components
- Removable back cover for cleaning
- Includes essential spare parts, bushings, stainless hardware, drive shaft, and mixing rod

SSK-MH

Stainless Steel Metering Housing

FOR JOHN DEERE
PNEUMATIC HOPPER
SERIES 1900, 1910

ORIG
No

A86501, A92922, M112835



- Made from durable, corrosion-resistant stainless steel 304 with strong and high-quality welded seams
- Laser-cut parts and lug designs ensure precise tolerances
- Made in Canada by Romafa Metal Works, Inc.

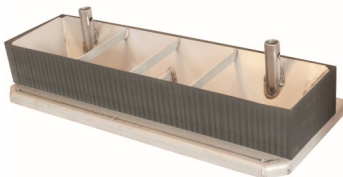
JAS0020A

2-port stainless steel coupling assembly

FOR JOHN DEERE
PNEUMATIC HOPPER
SERIES 1900, 1910

ORIG
No

A86501, A92922, M112835



- Stainless steel lower bracket funnel and custom material funnel seal
- Upper mounting bracket for dispenser made of stainless steel and custom seal
- Includes all necessary stainless steel hardware

SSK-UPR

Upper Stainless Steel Kit:

This kit contains all necessary parts between the metering housing and the ladder

FOR JOHN DEERE
PNEUMATIC HOPPER
SERIES 1900, 1910



- Stainless steel manifold bracket and foam seals
- Stainless steel lug extensions, side plates, cleaning plates, extraction latches, and hose clamps
- Central stainless steel manifold cover (depends on the number of channels)
- Includes all necessary stainless steel hardware

SSK-SS4 (4 Run), -SS6 (6 Run), -SS8 (8 Run)

FOR

JOHN DEERE
PNEUMATIC HOPPER
SERIES 1900, 1910

Lower Stainless Steel Kit for Single-Row System:

This kit contains all non-plastic components needed to restore the lower metering assembly from the metering housing base to the primary seed tubes.

ORIG
№

A69543, A70821, A72276, A88060, A88237, A63064, A63066 OR AA48753, AA61976

FOR A COMPLETE RETROFIT, THE FOLLOWING COMPONENTS ARE NEEDED:

A61522 (1 PER RUN), A61523 (1 PER RUN), A61524 (1 PER RUN), A61525 (2 PER RUN), A62188 (2 PER RUN), A63949 (1 PER RUN)



- Stainless steel manifold bracket and foam seals
- Stainless steel lug extensions, side plates, cleaning plates, extraction latches, and hose clamps
- Central stainless steel manifold cover (depends on the number of channels)
- Includes all necessary stainless steel hardware

SSK-DS4 (4 Run), -DS6 (6 Run), -DS8 (8 Run)

FOR

JOHN DEERE
PNEUMATIC HOPPER
SERIES 1900, 1910

Lower Stainless Steel Kit for Double-Row System:

This kit contains all non-plastic components needed to restore the lower metering assembly from the metering housing base to the primary seed tubes.

ORIG
№

A69543, A70821, A72276, A88060, A88237, A63064, A63066 OR AA48753, AA61976

FOR A COMPLETE RETROFIT, THE FOLLOWING COMPONENTS ARE NEEDED:

A61522 (1 PER RUN), A61523 (1 PER RUN), A61524 (1 PER RUN), A61525 (2 PER RUN), A62188 (2 PER RUN), A63949 (1 PER RUN)



- Stainless steel construction resists corrosion from fertilizers and treated seeds.
- Facilitates disassembly/assembly of the meter in assembly
- Direct replacement for OEM

METER SHAFT

Hexagonal stainless steel metering shaft

FOR

JOHN DEERE
PNEUMATIC HOPPER
SERIES 1900, 1910

ORIG
№

A57211



- Stainless steel construction resists corrosion from fertilizers and weather conditions.
- Direct OEM replacement
- Made in Canada by Romafa Metal Works, Inc.

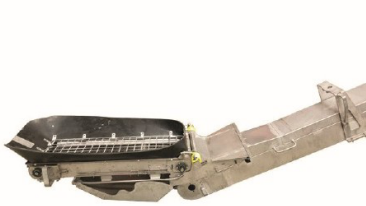
JAS500A

Stainless Steel Conveyor Housing:

FOR JOHN DEERE
PNEUMATIC HOPPER
SERIES 1900, 1910

**ORIG
No**

AA54917 & AA72953



- Custom-made to attach to the bottom of the existing conveyor housing
- Replaces corroded and non-functioning conveyor feeders
- Made in Canada by Romafa Metal Works, Inc.

JAS6000A

Stainless Steel Conveyor Tray:

FOR JOHN DEERE
PNEUMATIC HOPPER
SERIES 1900, 1910

STANDARD SOLUTIONS



N282536

Section pin



N283636

Bushings for section pin



N284086

Press wheel bushing



N280648

Closing wheel bushing



N280829

Y-tube adapter



N281754

Rubber gasket



N219547

Bushings for press and closing wheel pin



A85727

Seals for press and closing wheel bushings



**AN281170 /
AN281171**

Left/right closing wheel lever



N282110

Closing wheel



AN282296

Press wheel



A84050

Support wheel tire



SH49917

Notched half-discs



**N283994 /
N283995**

Left/right closing wheel spring



**N282218 +
N282219**

*Left/right press wheel
spring*



**N283804 /
N214190**

Disc coulter



N219982

Clamping plate



**N283730/
N283731**

Seeding boot (chisel)



N280485

Boot spring



AN282117

Depth axle



**N282118 /
N282119**

Depth axle bushing



**N282084 /
N283120**

Cover



N282710

Handle



AN281856

Hub assembly with bearing



AN281241

Large seal



B13294

Small seal



W33806

Large sleeve



**N282108 /
N282110**

Left/right lever



+38 067 522 52 42



ул. Мурманская 10, г. Кропивницкий



 YouTube

